



Mini Guide - Room Care R1-plus

Available in 1.5 litres Divermite

Use for cleaning:



Toilets



Urinals

Keeping safe:

- Diluted solution: not classified
- Concentrate: harmful
- Wear gloves for prolonged hand contact



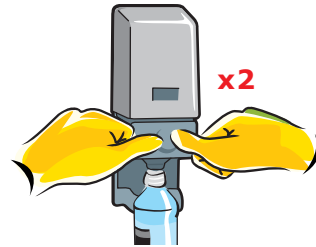
Daily use toilet and urinal cleaner



For use with Diversey Divermite system

Using...

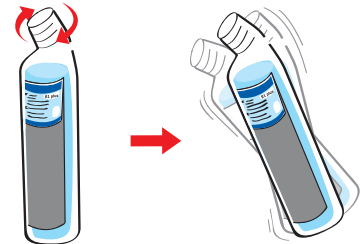
1



General cleaning

2 x doses into R1 Divermite bottle.

2



Screw on spout cap. Shake gently to mix.

3



Flush toilet. Reduce water level with toilet brush. Brush around bowl, especially around rim and below water line.

4



Direct nozzle under toilet rim. Squirt evenly over surface. Flush. Rinse brush.