

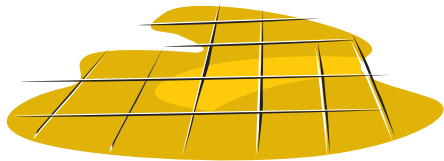


Suma Multi conc D2 conc Mini Guide

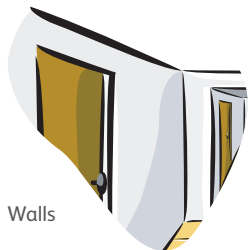
Available in 1.5 L Divermite



Use for cleaning:



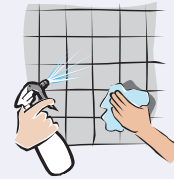
Floors



Walls



Divermite dispensing system

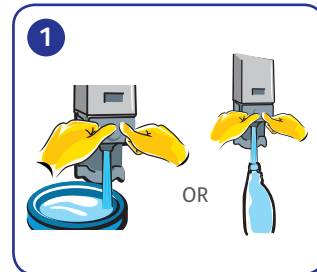


Spray and wipe



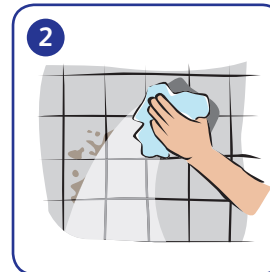
Multi-purpose kitchen detergent

Using...



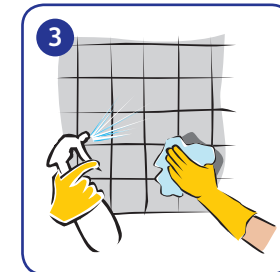
1

Dilute:
2 x doses into 5 L of hand hot water.
OR
1 x dose into 750 ml spray bottle.



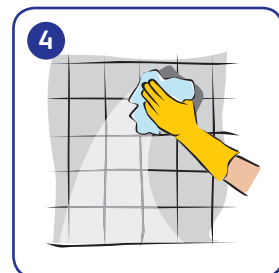
2

Remove debris before applying product.



3

Using cloth/ mop/spray, apply solution.



4

Rinse surface with clean water. Air dry.

