

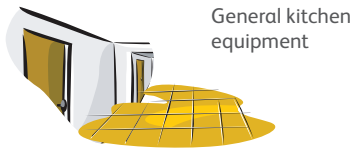


# Suma Multipurpose Cleaner D2.3 SmartDose Mini Guide

Available in 1.4 L



## Use for cleaning:



General kitchen equipment



Hand washing

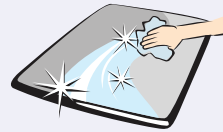


Glass

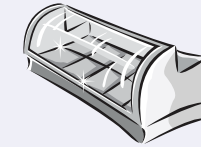
## Benefits...



SmartDose dispensing system



General surface cleaning



Leaves no residue and makes surfaces shine

## Application...

**1** Turn top to bottle or bucket position

8 L x 1      or      750 ml x 1

40 L x 1

### Dose:

Pull then push 1 x dose into 8 L of hand hot water for cleaning walls, doors and floors. Pull then push 1 x dose into 750 ml spray bottle for glass and hard surface cleaning. Pull then push 1 x dose into 40 L sink for hand dishwashing.

**2**

Remove debris before applying product.

**3**

Apply solution with cloth, mop or spray.

**4**

Rinse thoroughly and allow to air dry (except for glass cleaning).