

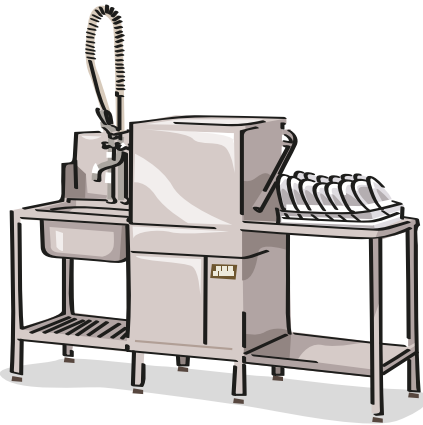


# Suma Alu L10 Mini Guide

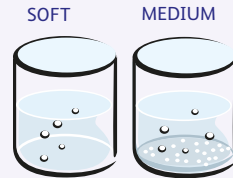
Available in 10 L SafePack



Use as a detergent for:



Auto dosed dishwashing machines

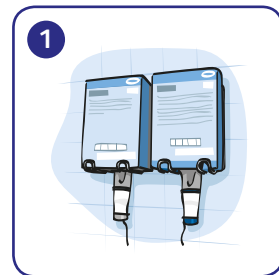


Dishwashing detergent for soft/medium water



SafePack innovation

Using...



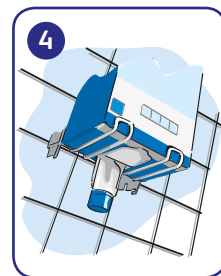
1 Use with Diversey auto dosed system or built-in dispenser.



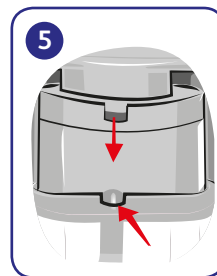
2 When SafePack is empty, twist the connector ANTI-CLOCKWISE to disconnect.



3 Remove and dispose of empty pack.



4 Place open SafePack container onto the rack.



5 Ensure the pin on the cap aligns with the notch on the connector.



6 Attach the connector to the SafePack container with a CLOCKWISE push and twist. The alarm will sound if it is not connected fully.



7 Turn on machine.

