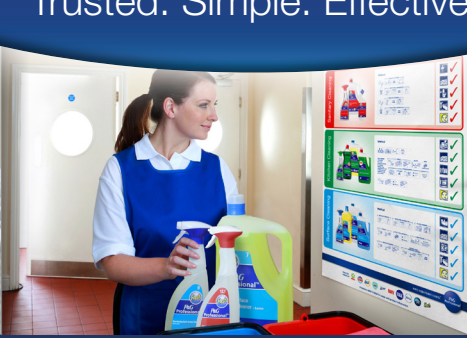


Trusted. Simple. Effective.



Ariel S1 Actilift Detergent

Concentrated liquid detergent, low foaming, for use with the Ariel Professional System

Professional detergent formulated with deep cleaning technology for stain removal in the 1st wash.



Use S1 with the Ariel Professional System ...for outstanding business results

Trusted

- From a market leading brand Ariel.
- Delivers 1 Wash Clean.

Simple

- No matter what your key laundry goal is, there is an Ariel Professional System for you.

Effective

- Deep cleaning technology lifts out stains even from the deepest layers of the fabric.
- Effective from 30°C wash temperature.
- Delivers gentle fresh smell on the linen.
- Controls foam level of the wash cycle.
- Formulated without bleach. Contains brightening agents.

★★★★★ Satisfy your guests

Cleanliness can help you improve your ratings & reviews and generate incremental business.



Minimize your total operating cost

The Ariel Professional System can help you worry less about the cost of rewash.



Contribute to a more sustainable development

Rewash is also associated with energy water and chemical consumption.



Care for your staff

The Ariel Professional System can help make your operations more efficient by delivering cleanliness from the first wash.

every experience counts.™

P&G
Professional

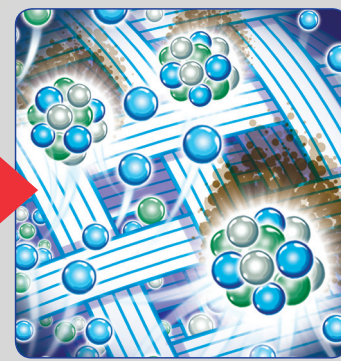
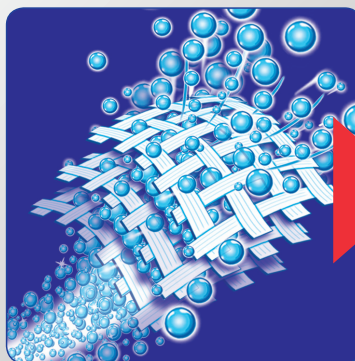
Technical information



Research & Development Corner

A combination of technologies are expertly formulated together to deliver 1 Wash Clean.

- Enzymes target specific stains and break them down from within the fabric.
- 3 Types of surfactants combine their power to lift out stains from all the layers of fabric.
- Polymers help suspend soils and prevent them re-depositing onto fabric.
- Brightening agents improve the reflective qualities of the fabric making whites look whiter.
- A specially designed perfume system delivers a non-overpowering, subtle freshness.
- Ariel S1 is phosphate free.



Technical Description

- **EAN code:**
- **Appearance:** Blue-Green liquid
- **Smell:** Perfumed
- **pH (10%):** 8.00
- **Density:** 1.07 g/ml
- **Water solubility:** High

Safety Instructions

Please make sure your employees read and understood the product label and your COSHH assessment (Chemical Risk Assessment in EU) before using this product. The label contains directions for use and both label and SDS contain hazard warnings, precautionary statements, first aid procedures and storage information. SDS are available on-line at our website www.pgpro-msds.com or can be provided to you via the call center.

Usage & Dosing Instructions

This detergent can only be dosed through **the P&G Professional Dosing equipment.**

- Can be used in the prewash and the mainwash.
- Dosage depends on the local site conditions such as the machine size, water hardness, and the amount of soil. Please refer to your P&G representative.

Where to Use

- Can be used on all types of white and colored textiles, except on silk, at temperature of 30-95°C for whites and 30-60°C for colored loads.
- Delivers excellent performance even in short cycles and low temperatures.
- Is efficient at all water hardnesses.

Where Not to Use

- Not for use on silk. Can accelerate wear-out of wool.